

EARLY ASSESSMENT OF WIND POWER PROJECTS AND REINDEER HUSBANDRY

Remote sensing as a tool

2024-03-18



The Challenge

Reindeer husbandry

...is an integral part of indigenous peoples' rights

...is always a critical factor in land use change in the north

...is assessed as part of the environmental permitting process

How can we work smarter to find solutions for co-existence?



Background

Sápmi

samernas land



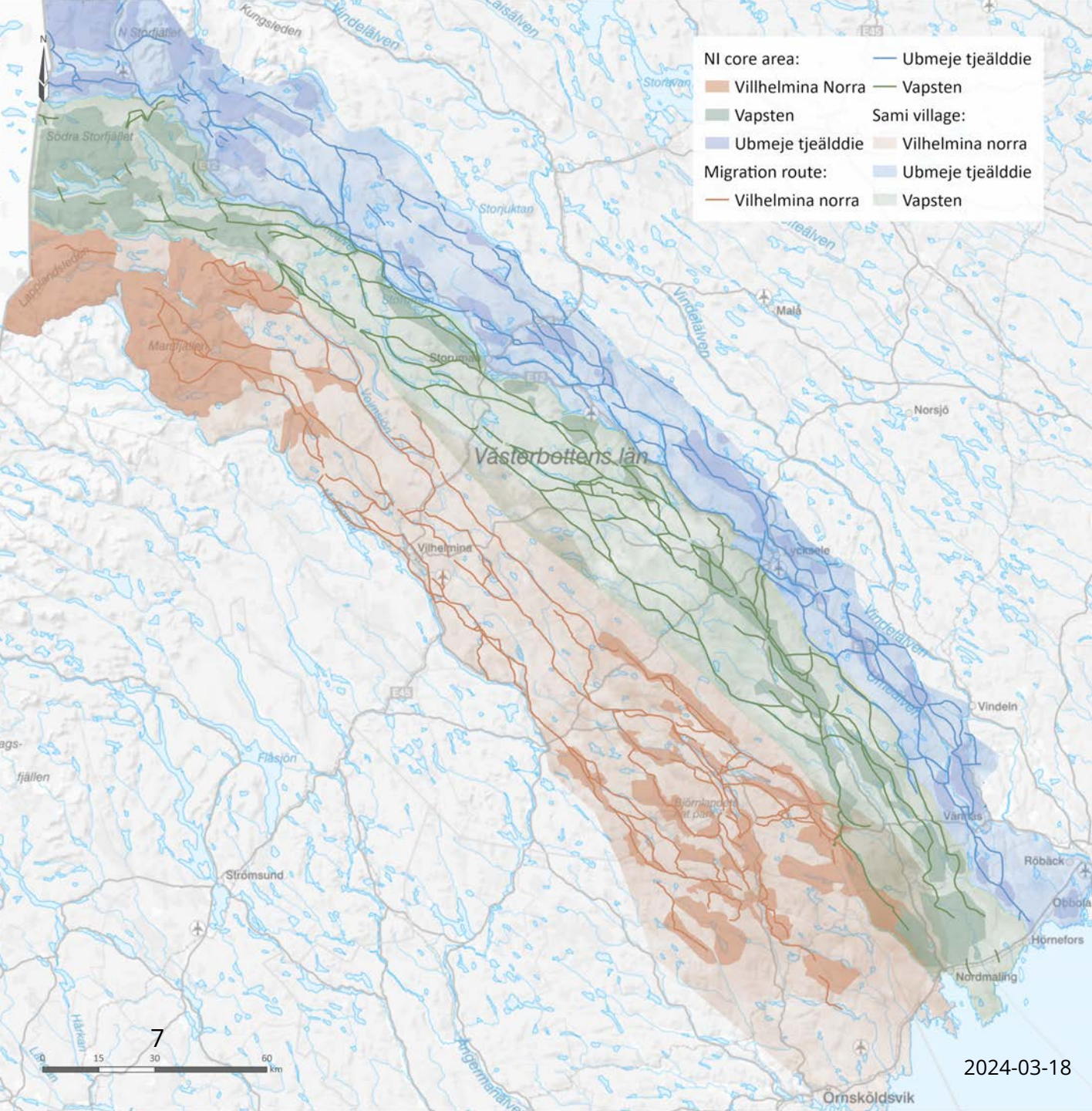
Den här kartan, ritad av Anders Suneson, är förtäga till Nordiska museets karta över Sápmi. Illustration: Anders Suneson www.tecknadebilder.se



Reindeer husbandry

- ✓ 50 % of Sweden's area
- ✓ Indigenous peoples with constitutional rights
- ✓ No veto, but growing legal praxis
- ✓ Energy area 1 & 2
- ✓ Energy surplus and transmission losses
- ✓ Electrification of industry transforming this picture





Sameby

- ✓ 51 reindeer herding districts, or "sameby"
- ✓ Economic and geographical unit
- ✓ Annual cycle
 - Sommar grazing in the Fells
 - Winter grazing towards the Baltic Sea coast
 - Migration along the river valleys
 - Facilities in at least three seasonal locations
- ✓ Fixed ceiling for number of animals per herd or sameby

Obstacles

Dialogue with the sameby

- ✓ Conflicts of interest
- ✓ Administrative burden
- ✓ Staff capacity varies greatly
- ✓ Requests for dialogue on a bi-weekly basis
- ✓ Stress and worry



Co-ordination among parties

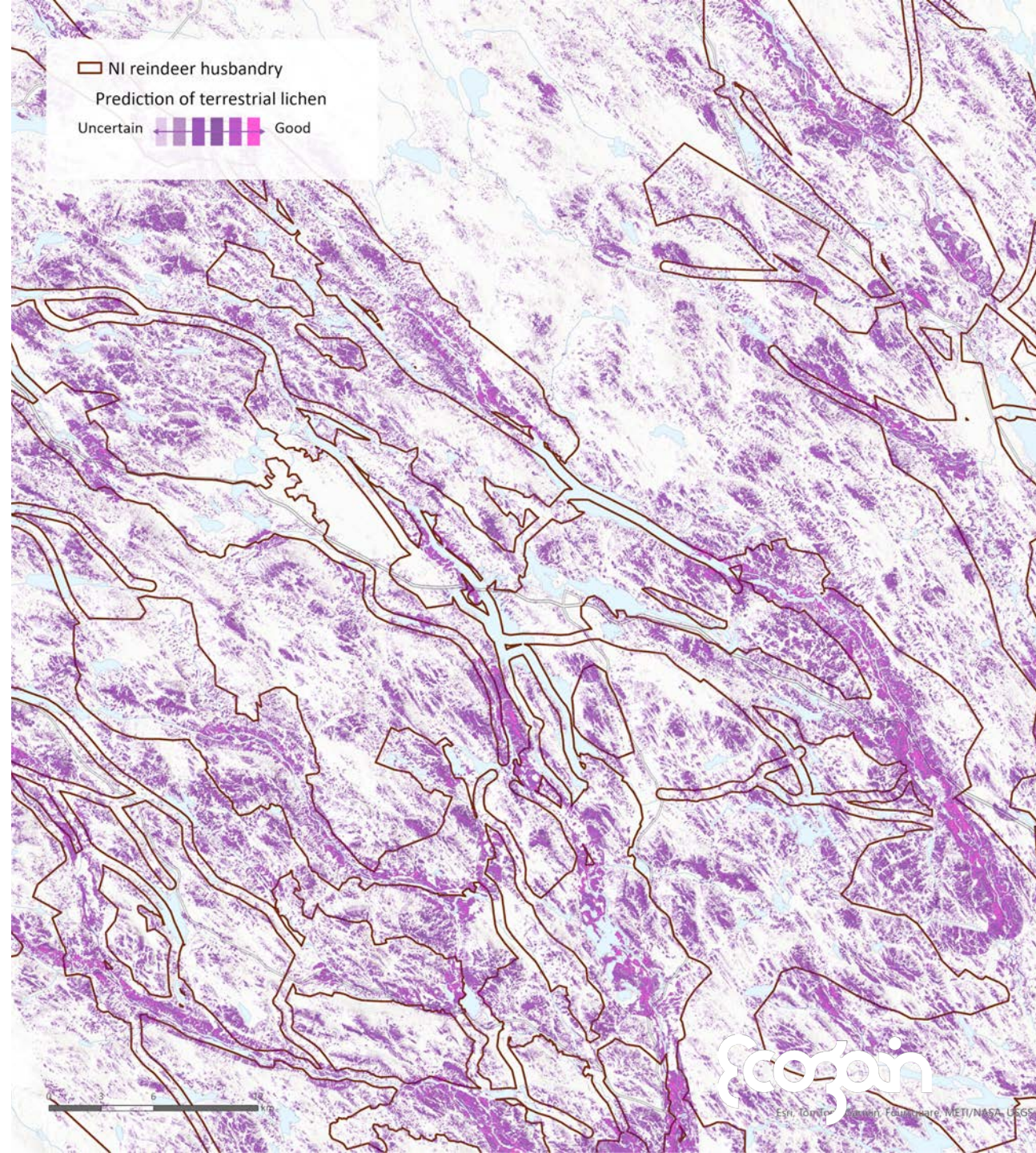


- ✓ Sameby borders ≠ administrative jurisdictions
- ✓ Diversity of wind power companies
- ✓ A variety of industries
- ✓ Forestry practices

The Way Forward

Remote sensing

- ✓ Not all pastures are created equal
- ✓ Scan large geographical areas from the desk
- ✓ Identify key grazing areas based on lichen density
- ✓ Vegetation, ground humidity, soil types
- ✓ Limitations based on resolution





Field survey

- ✓ Verify results of remote sensing on site
- ✓ Limit field work to the most promising sites
- ✓ Can be used for compensation and off-setting

HANDBOK RENNÄRINGS- UTREDNINGAR

svensk
vindenergi

New handbook!

Last year, the Swedish Wind Energy Association launched a handbook with the goal of standardising the methodology for reindeer husbandry impact assessments across the industry.

This marked an important shift towards a more empirical, objective approach.

A Win-Win Situation

More efficient outcomes



Allocating resources to projects with a good prognosis, avoiding dead weight



Reducing uncertainty around land access and thereby time to permit



Demonstrating a sound project pipeline to investors



Minimizing reputational risks and smoother dialog with landowners



Increasing efficiency by being prepared before starting the consultation process

Concluding Remarks



Rejecting the most problematic sites makes both ethical and economic sense!



There challenge is to identify these sights in a timely fashion!

THANK YOU!



Carly Smith

carly.smith@ecogain.se

073-474 72 45

