

Blade repair in artic climate

Greger Nilsson



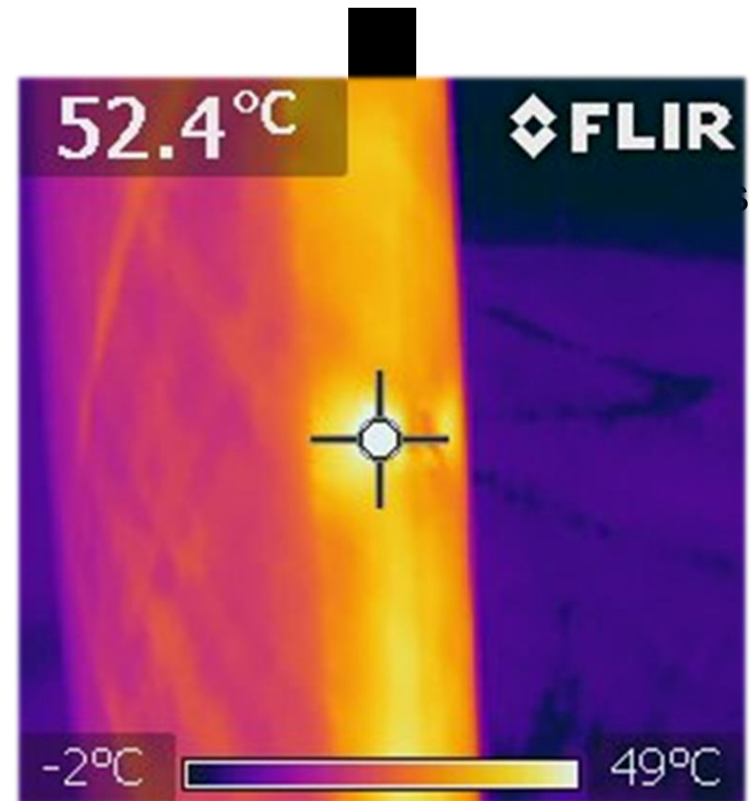
Blade Solutions

- Repair of carbon heat mats, AIS
- Cold climate repairs, small and structural

AIS repairs

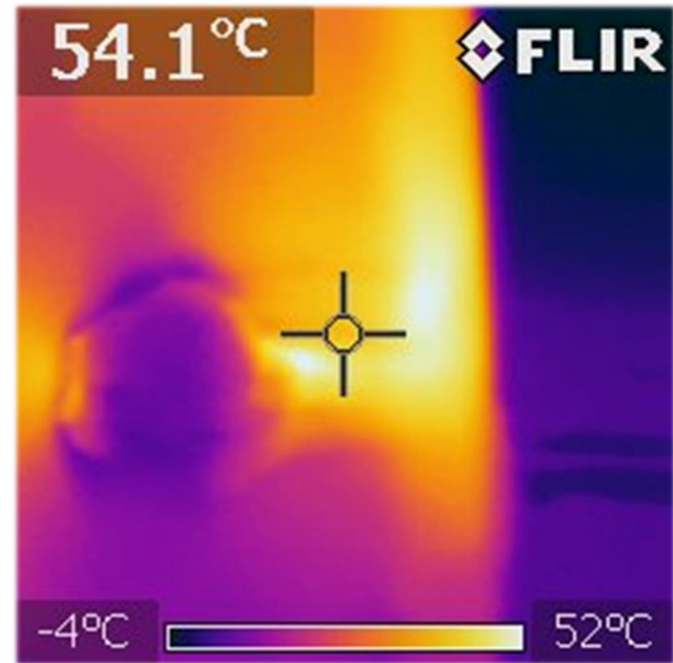


Carbon heat mat damage



Impact

Carbon heat mat damage

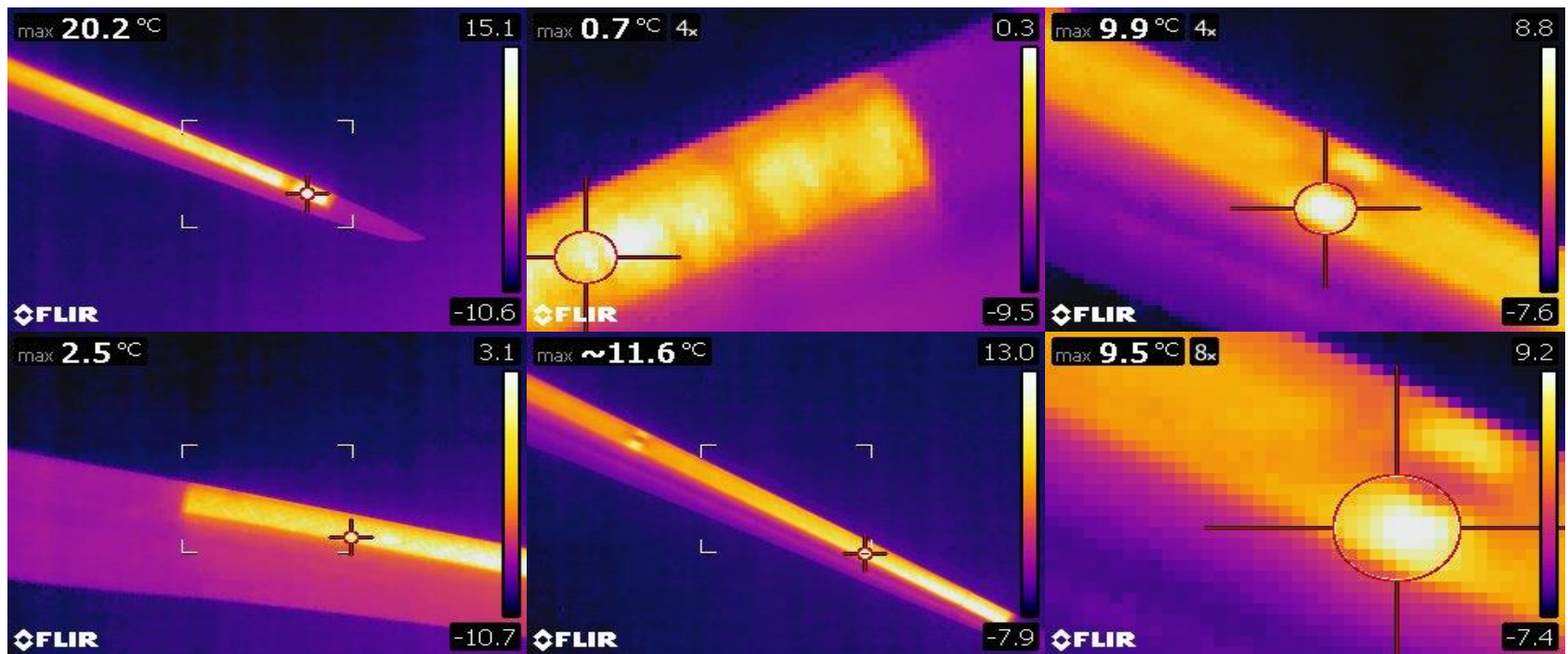


Lightning

Infrared inspections



Infrared inspections



Set value at tip, 20 °C

Cold climate repairs

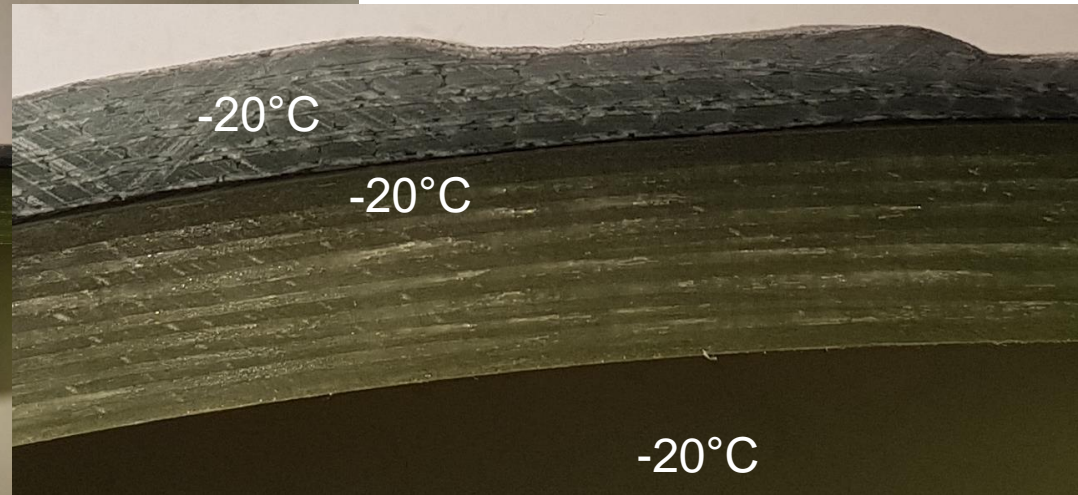
- Small repairs
- Structural repairs

Small repairs



JEC Innovation Awards 2022

Structural repairs

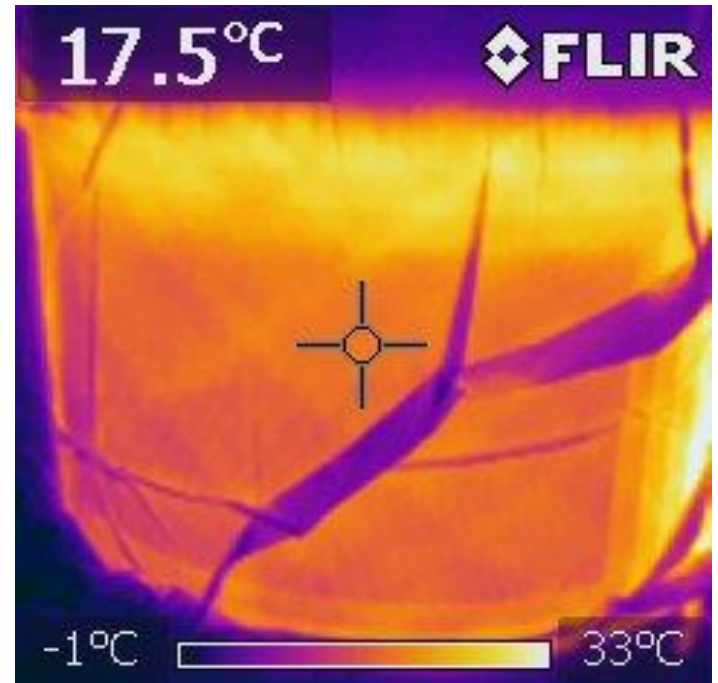
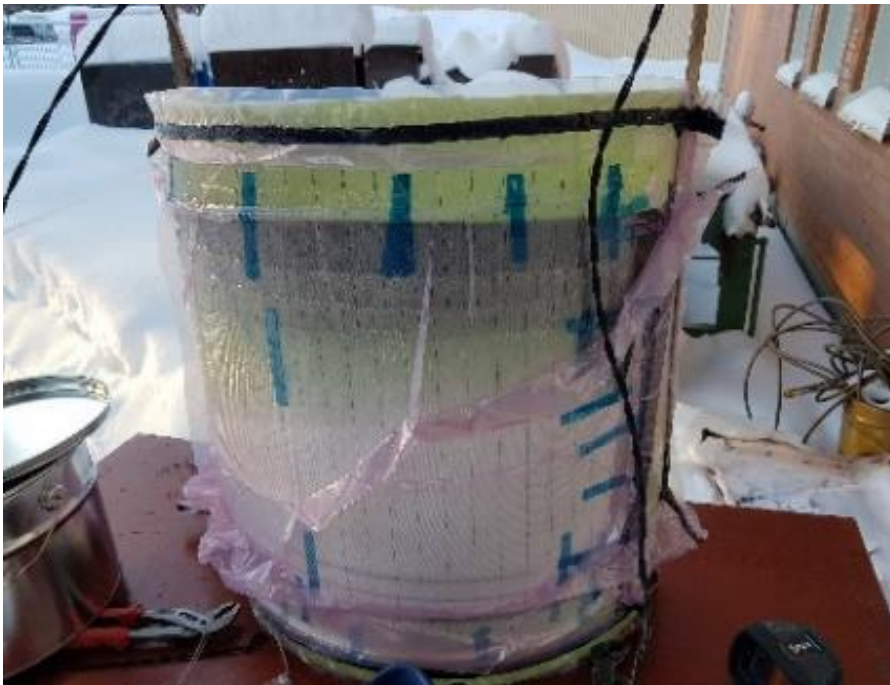


Cold climate repairs

Resistive vacuum infusion

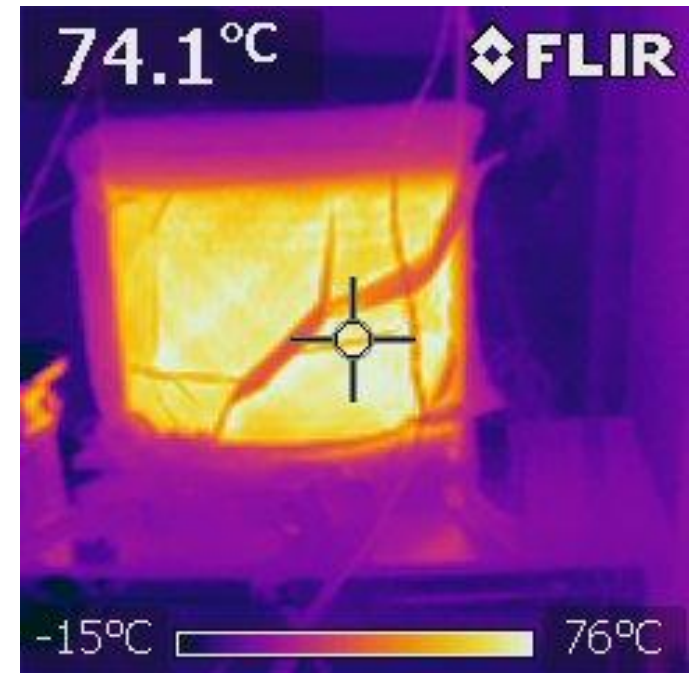


Vacuum infusion



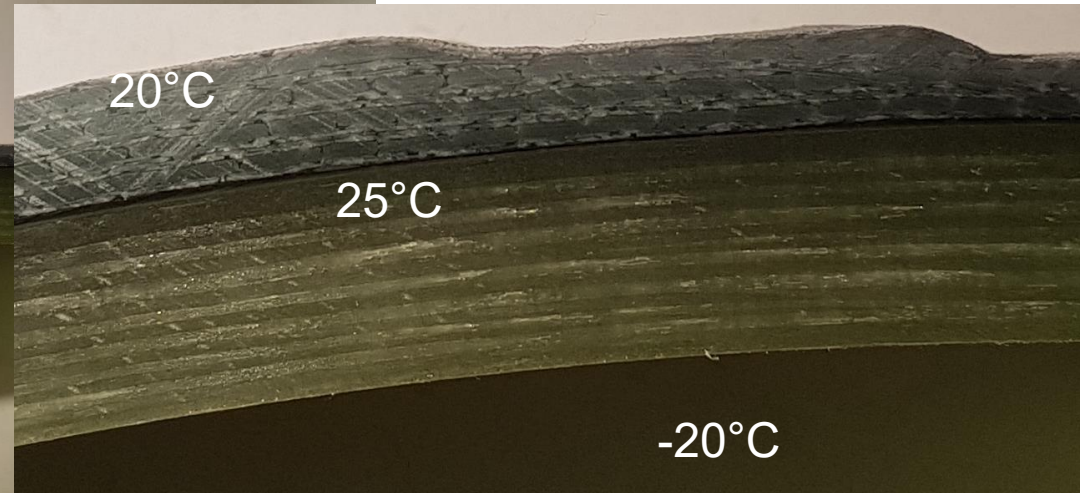
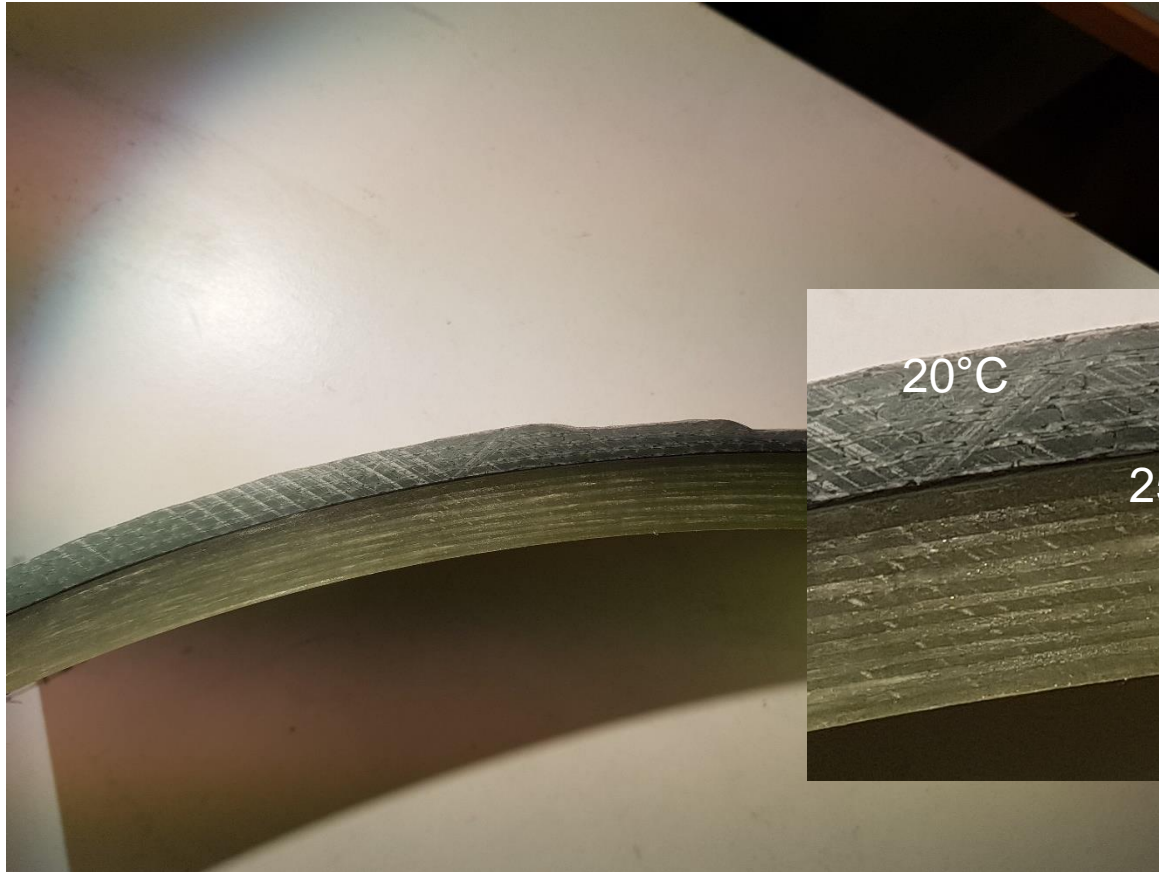
Outside temperature -15°C

Curing and post curing

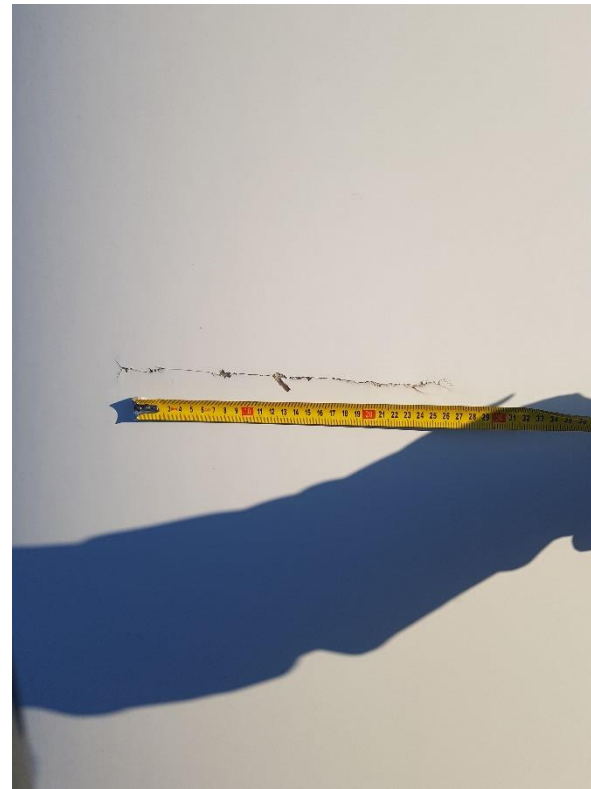


Outside temperature -15°C

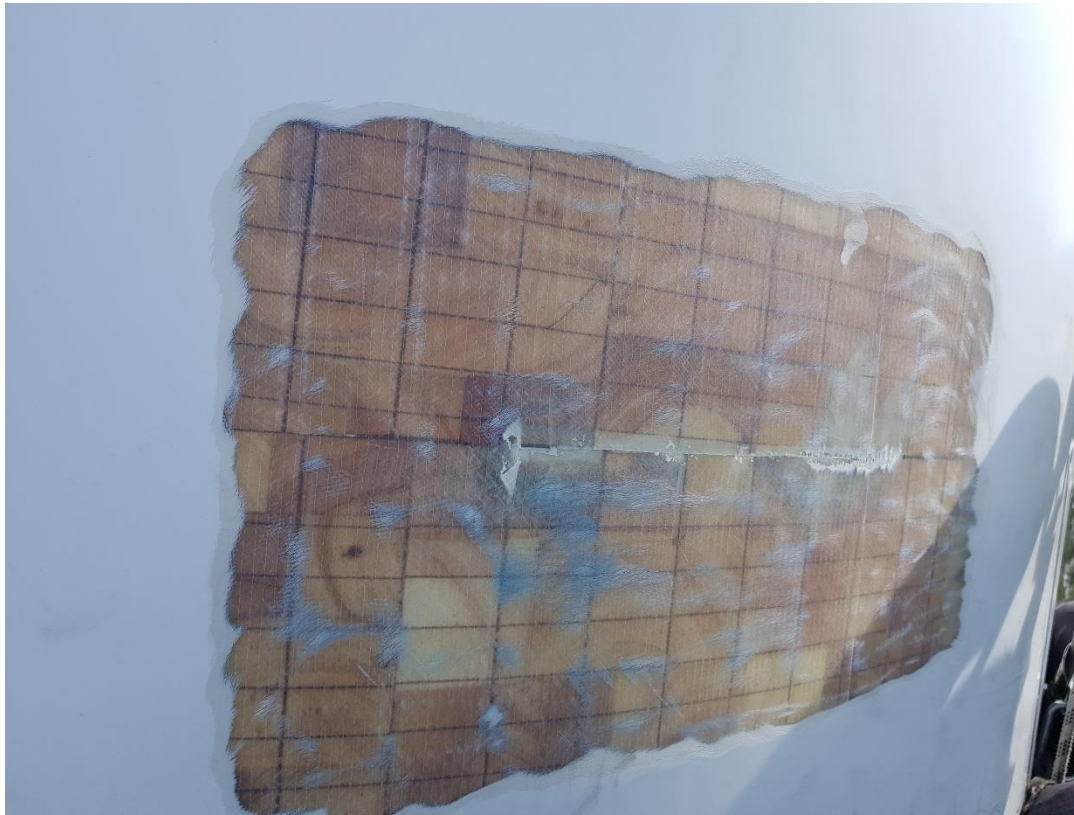
Repair by resistive vacuum infusion



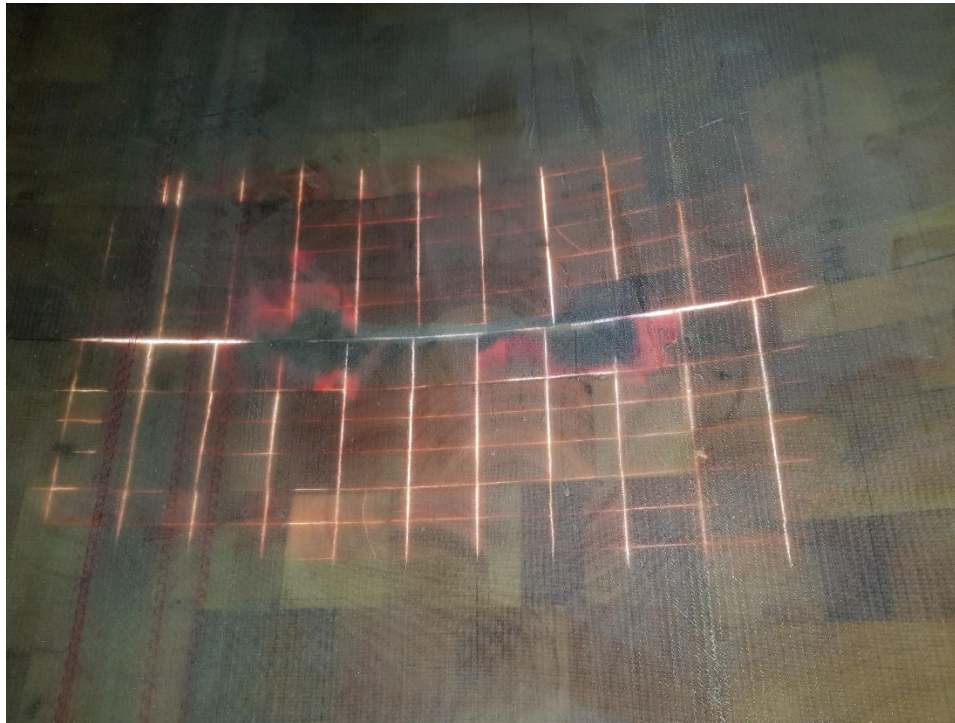
Blade inspection and fibre wrinkle defect



Remove gelcoat



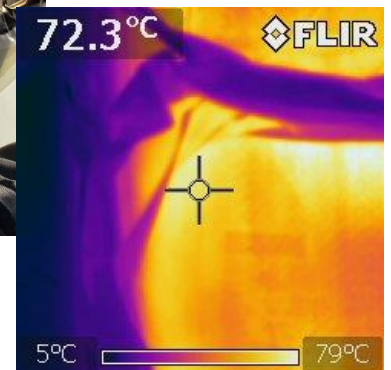
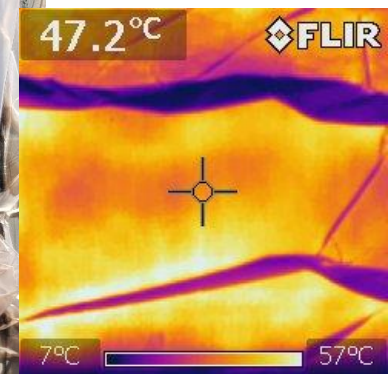
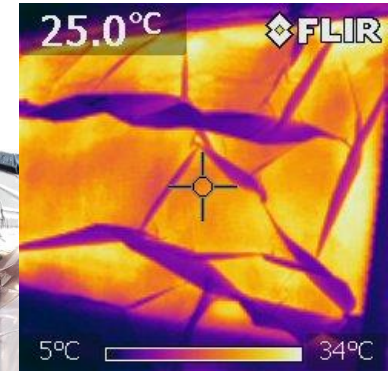
Inside blade



Crack propagation

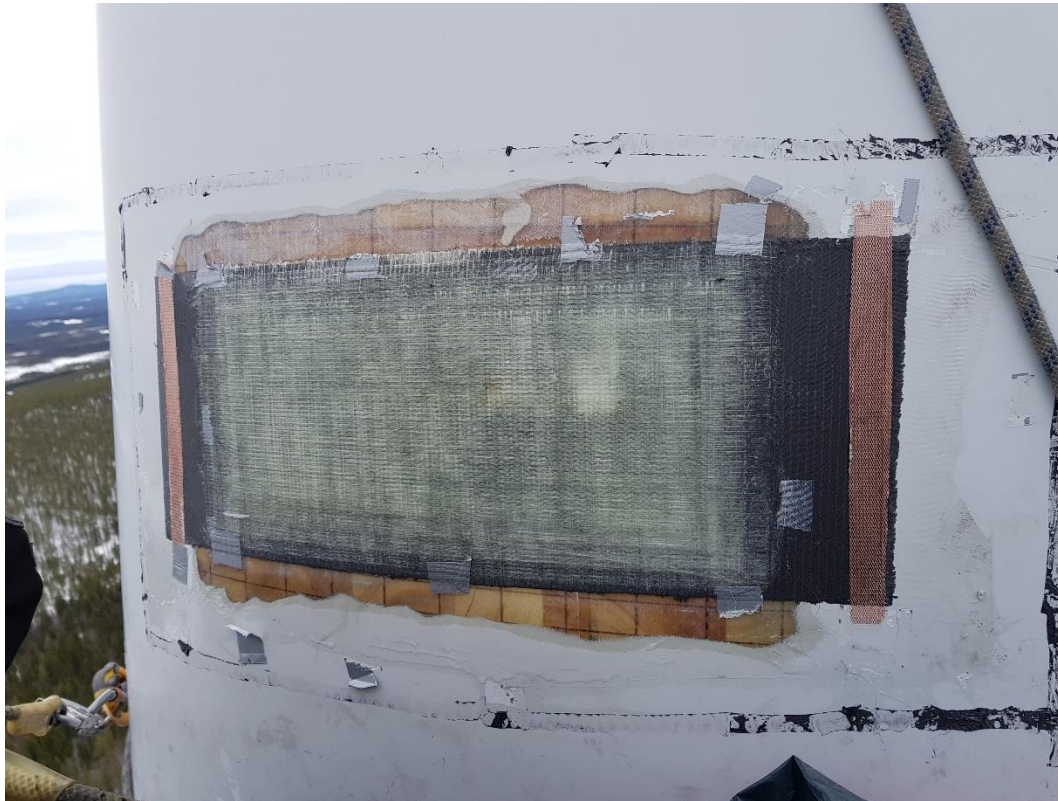


Repair inside blade by resistive vacuum infusion



Outside temperature -10°C

Results after removing bag



After applying topcoat

