

IceWind

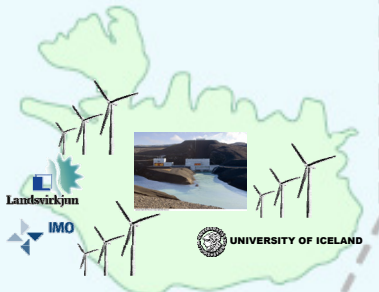
Improved Forecast of Wind, Waves and Icing
A new Nordic R&D project - www.icewind.dk

Clausen, N.-E¹., G. Giebel¹, H. Holttinen², K. Jónasson³, A.K. Magnusson⁴

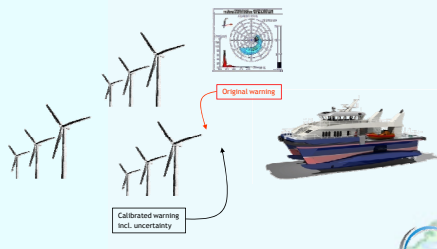
¹Risø DTU, 4000 Roskilde, Denmark; necl@risoe.dtu.dk; phone +45 46775079. ²VTT Technical Research Centre, Espoo, Finland. ³University of Iceland, Reykjavik. ⁴Meteorologisk Institutt, met.no, Oslo, Norway



WP 2 Iceland
Wind atlas, identification of wind farm sites, technical and market integration studies

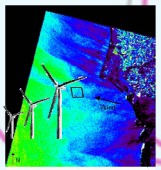
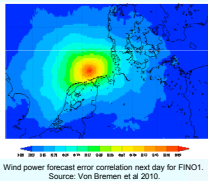


WP 1 Icing
Atlas of icing for Iceland and Sweden, forecast of icing, estimate of losses due to icing



WP 3 Forecast and O&M
Offshore meso-scale effects of large wind farms incl. wakes, short term forecasting, maintenance strategies and availability

WP 4 Power and energy aspects
Spatial and temporal variability of wind resource, forecast errors and their impact on the Nordic power grid and balance market



The Icewind project consists of four work packages (WP)

Project focus areas

- Icing on wind turbines (atlas, forecasting and losses)
- Integration of wind energy on land (Iceland)
- Offshore wind energy (forecasting and access)

A key issue is to share knowledge among the five Nordic countries and to work in areas where differences in know-how exist and where barriers or challenges prevent or slow down a large penetration of wind energy in the Nordic grid.