

Cold Climate Experiences - StorRotliden

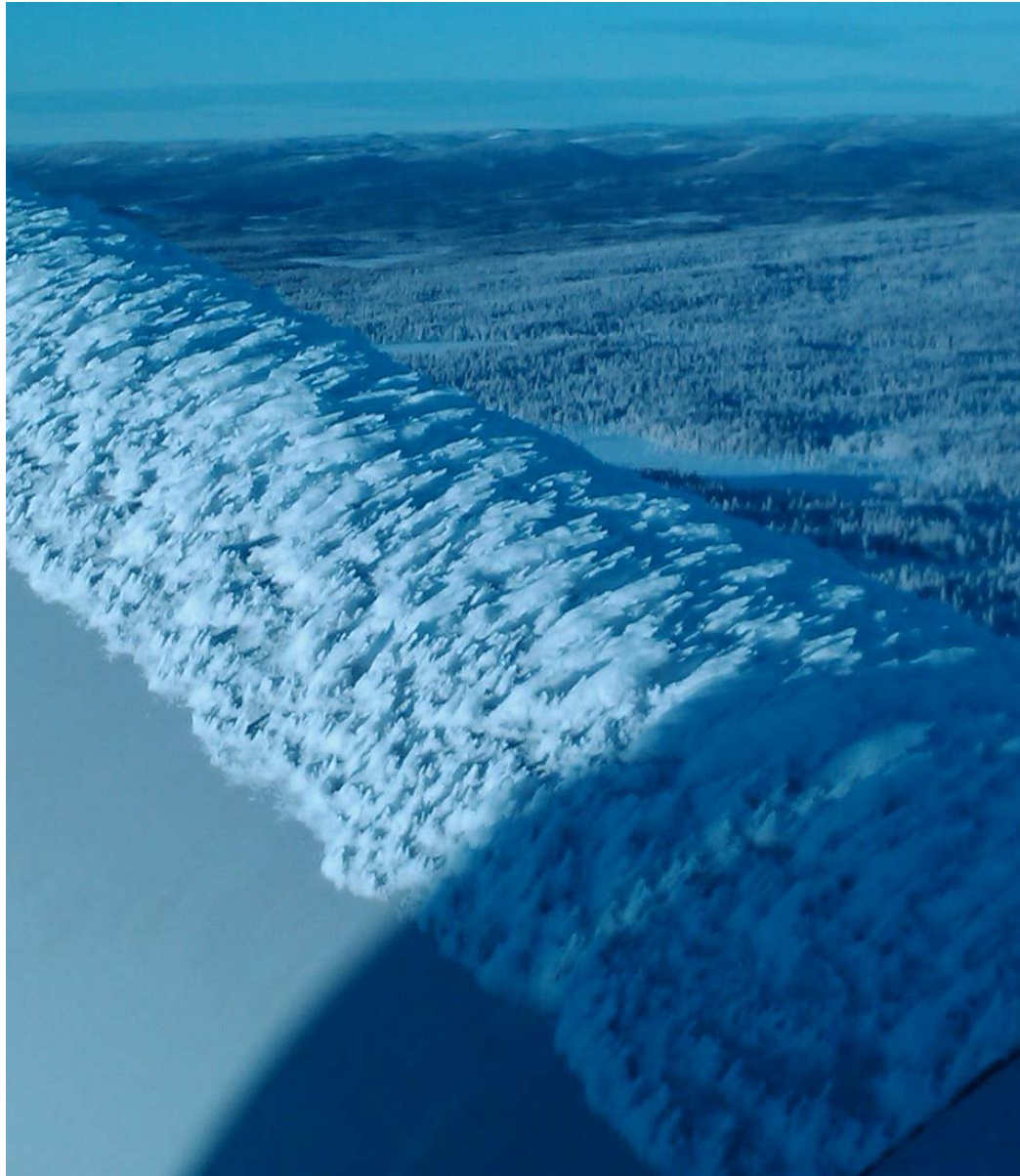


Basics

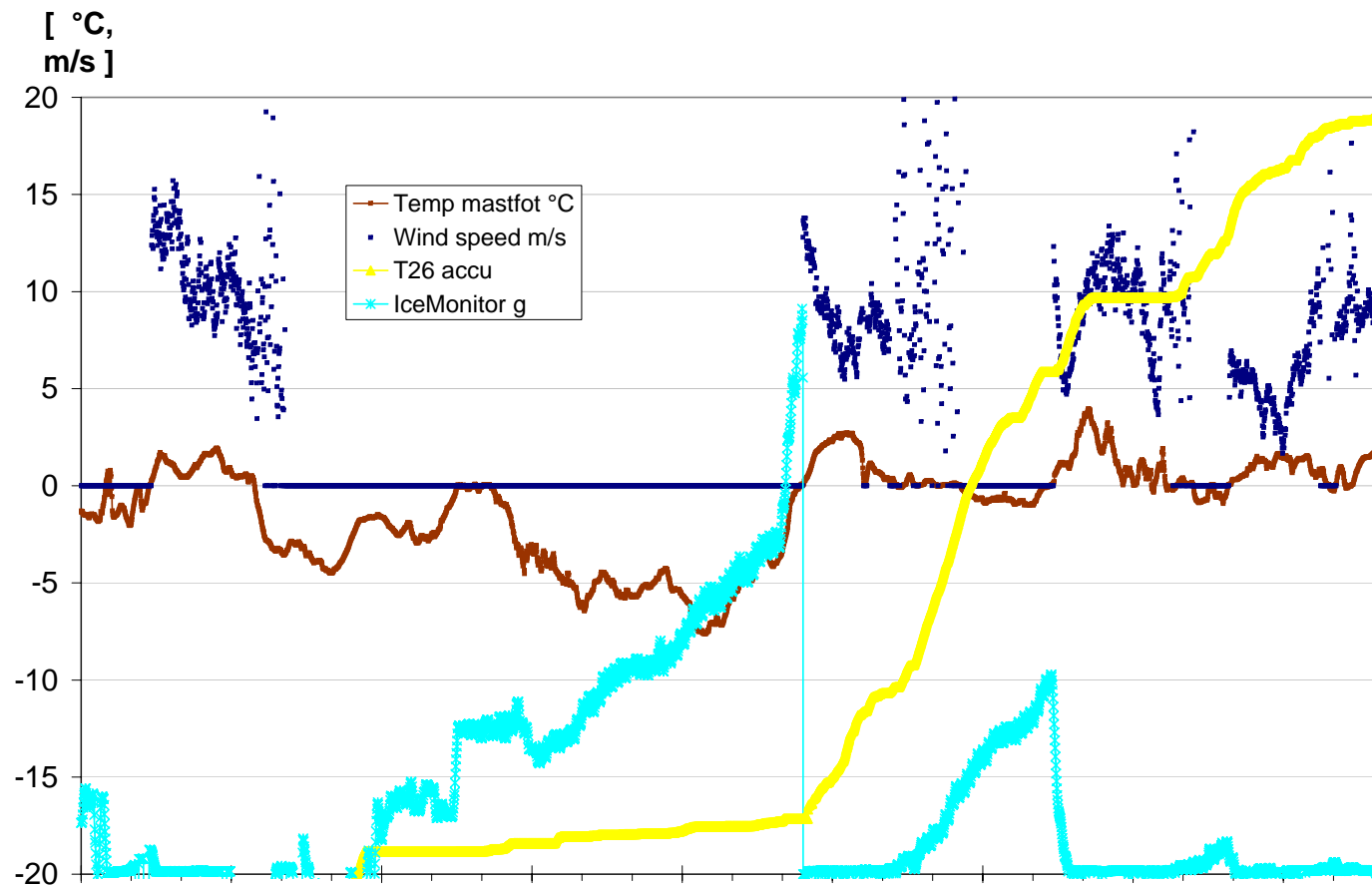
- Installed capacity 78MW
- Number of turbines 40
- Supplier Vestas V90 1.8 (11) and 2.0 MW (29)
- Expected annual production 229GWh
- Investment cost 1.5bSEK
- Building and Construction spring 2009 to fall 2010
- Last machine was grid connected November 16th
- Located in Åsele Community

- **No de/anti icing equipment**
- **Equipment to detect vibrations**
- **Ice sensors will be mounted**

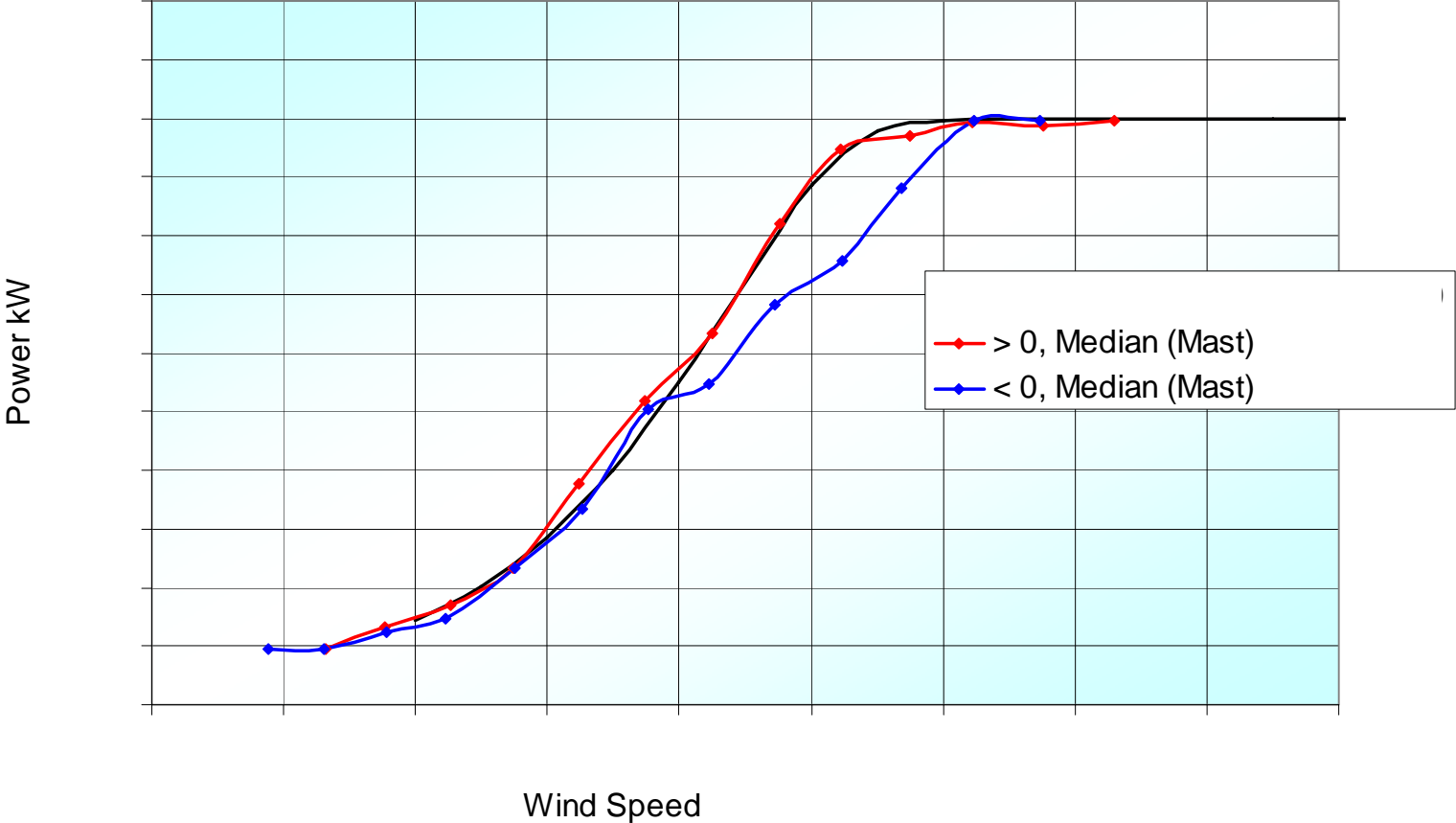
Challenges



Difficult to detect icing situations



An example of performance in CC



Requirements for safe and economic utilization of wind power in CC

- More reliable - “Ice maps”
- Cost effective and Reliable - Anti/deicing equipment
- Better ice sensors suitable for use in wind power

