




What we learned –
Adaptation and development of
measurement technique, power supplies
and camera supervision for icing conditions

Bengt Norén, In Situ Instrument AB

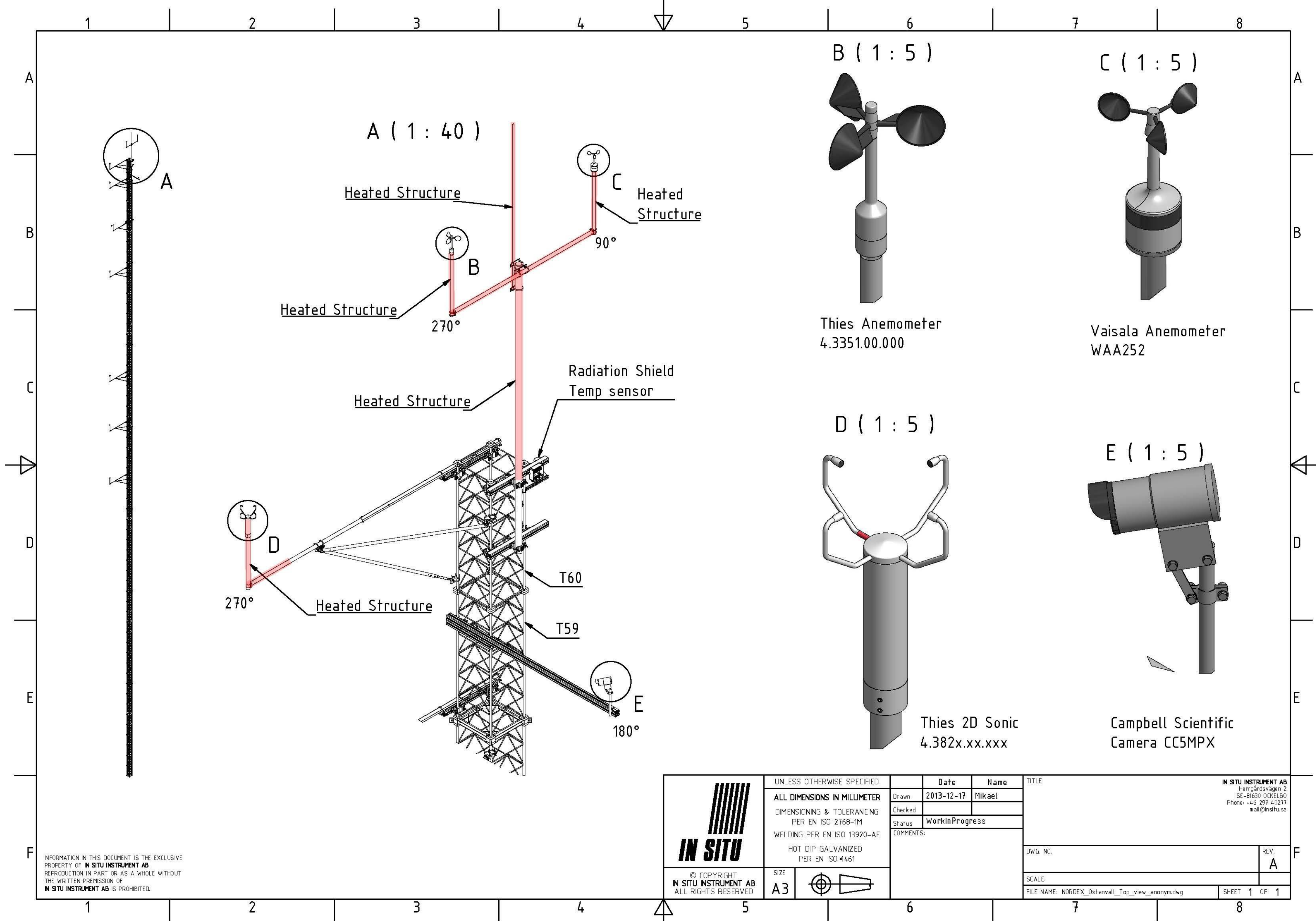


Icing measurement
on a Siemens Wind Mill





Lidar system on 4m pedestal
Mast with heated top mount.
Diesel generator in container





INFORMATION IN THIS DOCUMENT IS THE EXCLUSIVE
PROPERTY OF **IN SITU INSTRUMENT AB**.
REPRODUCTION IN PART OR AS A WHOLE WITHOUT
THE WRITTEN PERMISSION OF
IN SITU INSTRUMENT AB IS PROHIBITED.

 IN SITU	UNLESS OTHERWISE SPECIFIED		Date	Name	TITLE IN SITU INSTRUMENT AB Herrgårdsvägen 2 SE-81630 ÖCKELBO Phone: +46 297 40277 mail@insitu.se	
	ALL DIMENSIONS IN MILLIMETER		Drawn	2013-12-17 Mikael		
	DIMENSIONING & TOLERANCING PER EN ISO 2768-1M		Checked			
	WELDING PER EN ISO 13920-AE		Status	WorkInProgress		
	HOT DIP GALVANIZED PER EN ISO 1461		COMMENTS:			
© COPYRIGHT IN SITU INSTRUMENT AB ALL RIGHT'S RESERVED	SIZE		DWG. NO.			REV. A
	A3		SCALE:			
			FILE NAME: NORDEX_Ost anvall_Top_view_anonym.dwg			SHEET 1 OF 1

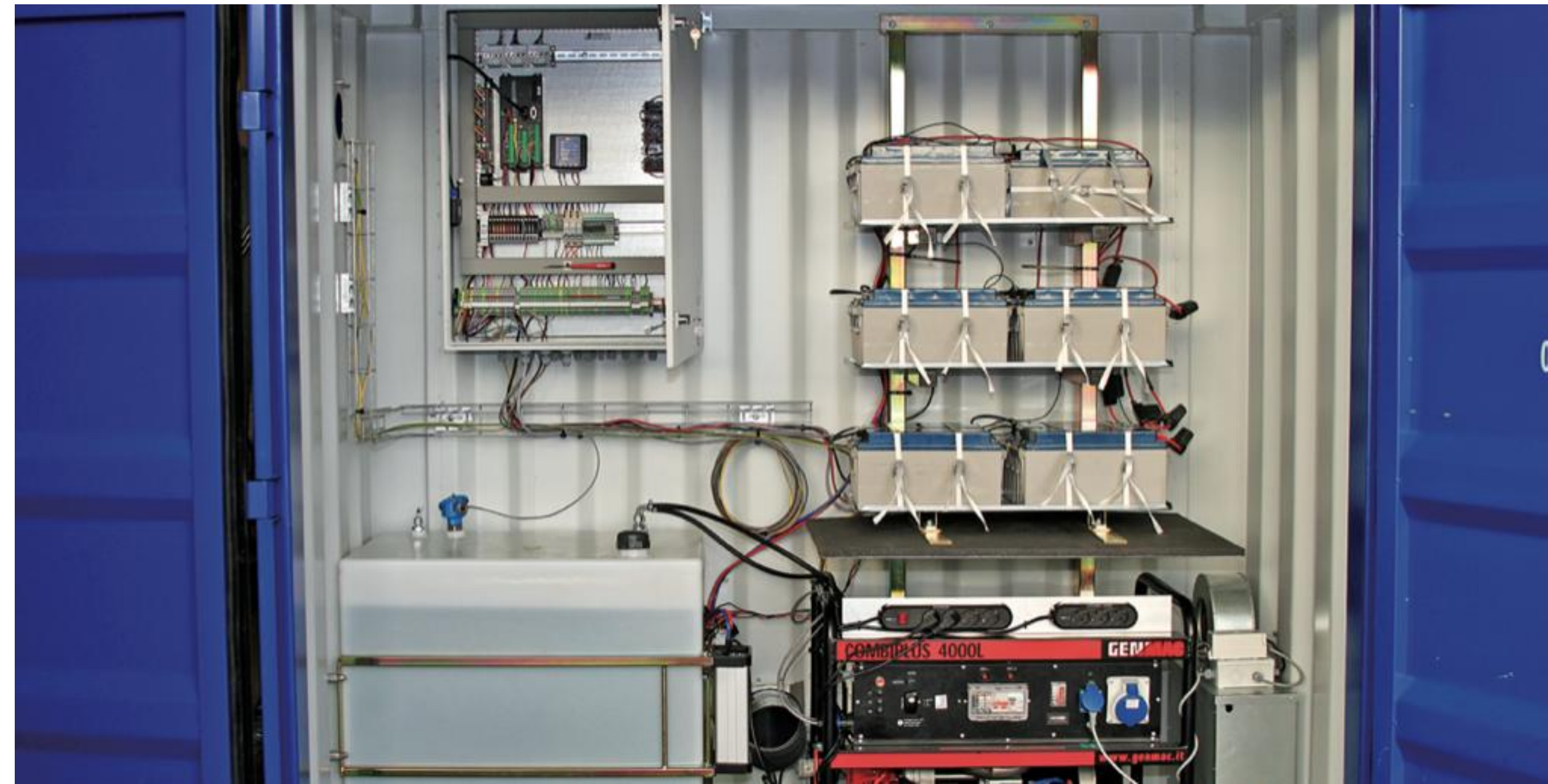


In the Baltic Sea

Customer demand:

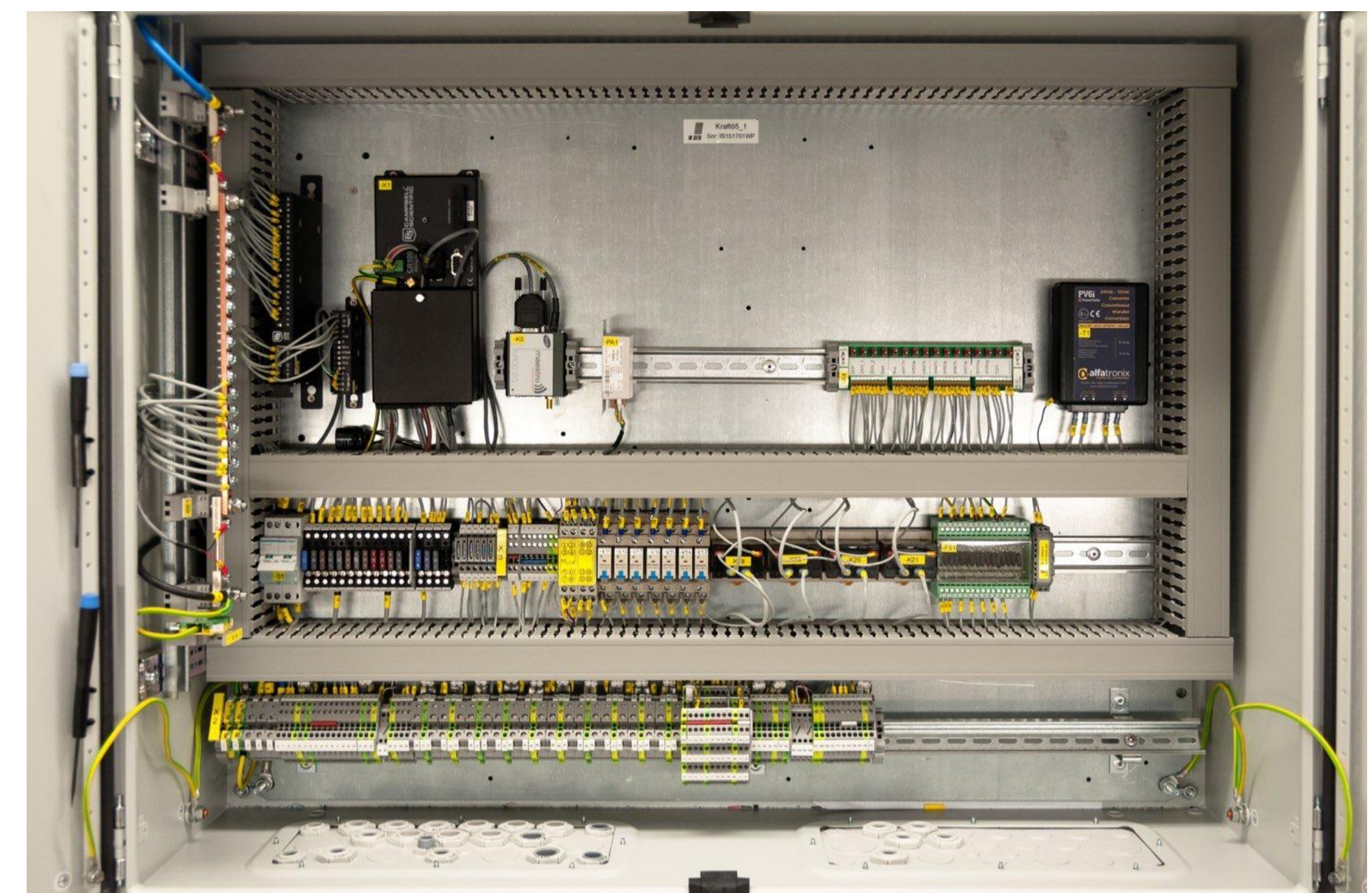
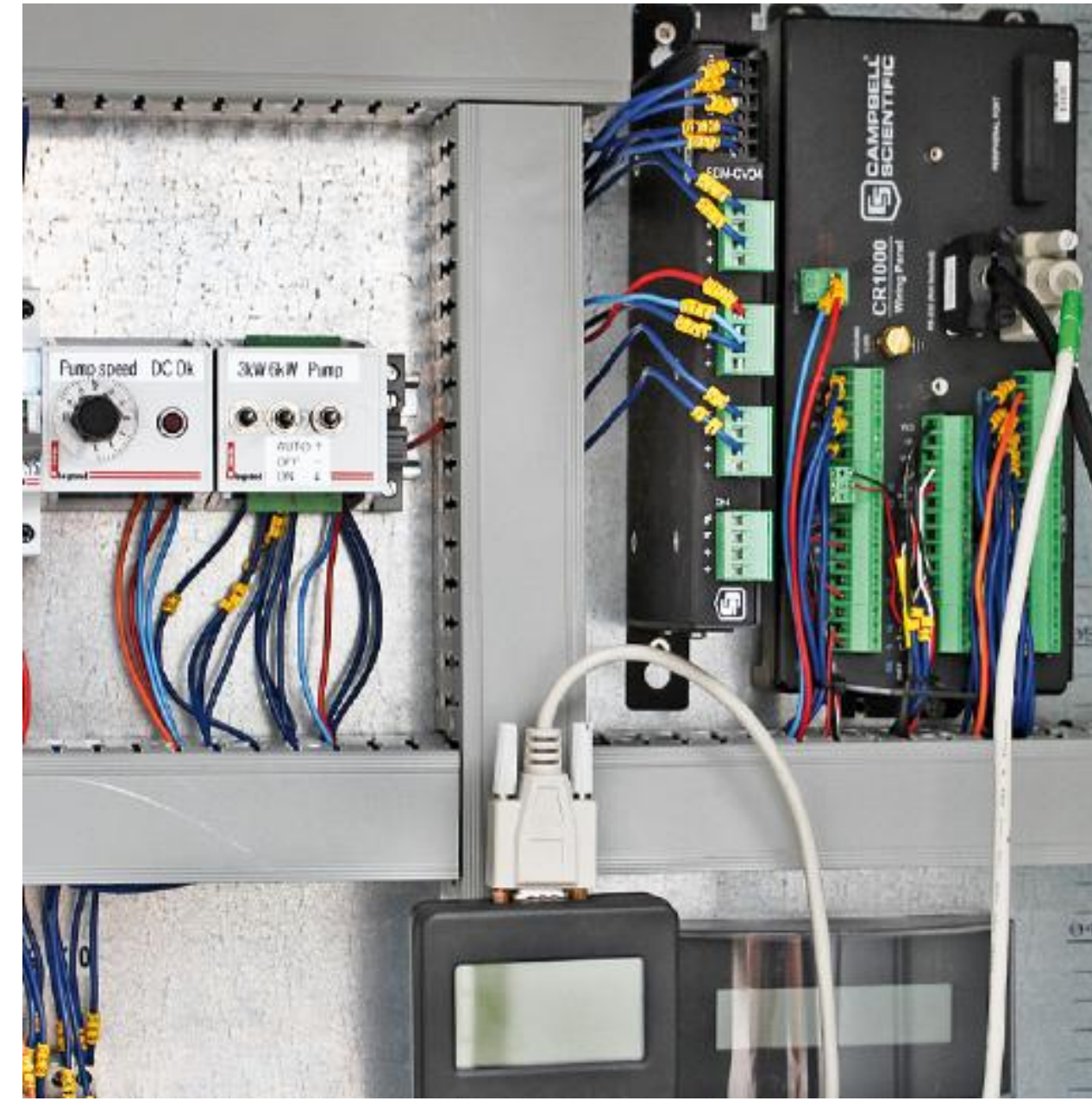
Seven months autonomy
during winter conditions,
with diesel and solar power.

We did it!



Innovation

- Decades of experience with innovative problem solving in a great variety of fields
- Thorough engineering competence in mechanic construction, measurement technique, electronics, data communication and programming as well as general material knowledge
- In-house product research and development capabilities, participation in external development projects



Measurement systems

- Hydrology systems
- Flux systems (Turbulent fluxes, greenhouse gases)
- Dam monitoring (Geotechnical dam safety)
- Icing measurement
- Thermo response (Geothermal energy analysis)
- Vibration measurement
- Wind power meteorology



Services

Problem analysis
Project management
Systems design
Installation

Monitoring
Data collection
Data analysis
Control plans

Calibration
Certification
Documentation
Training