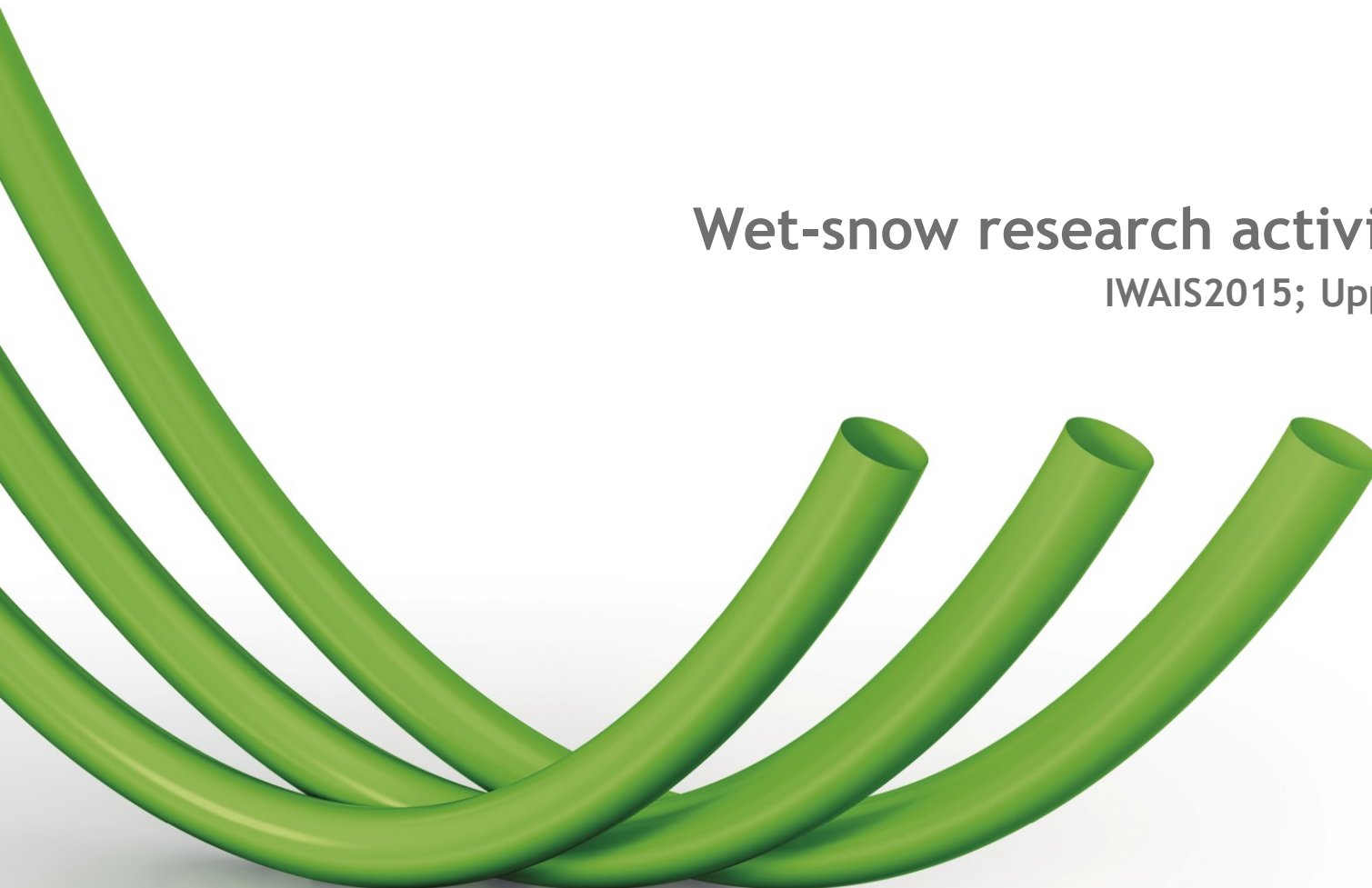


30 June 2015

# Wet-snow research activity in Italy

IWAIS2015; Uppsala (Sweden)

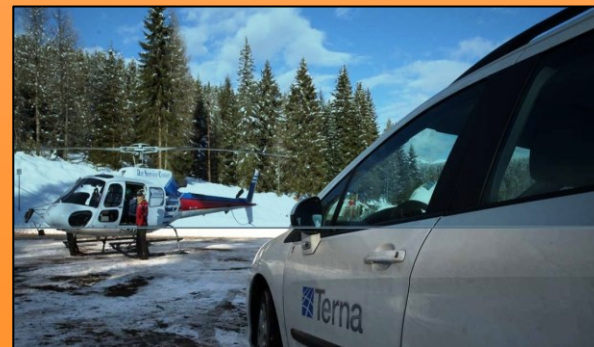


# The wet-snow problem

## Direct effects



## Emergency & Restore Operations



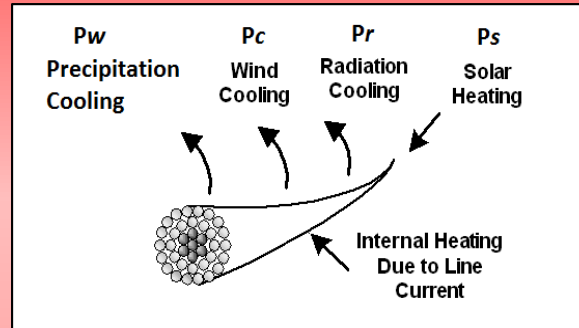
## Indirect effects



## Active Methods

### Thermal Methods

#### Joule-effect anti-icing

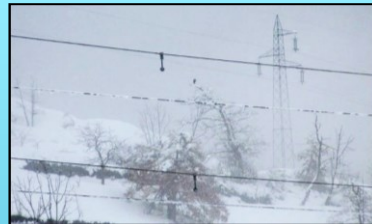


Anti-icing device



## Passive Methods

### Counterweight

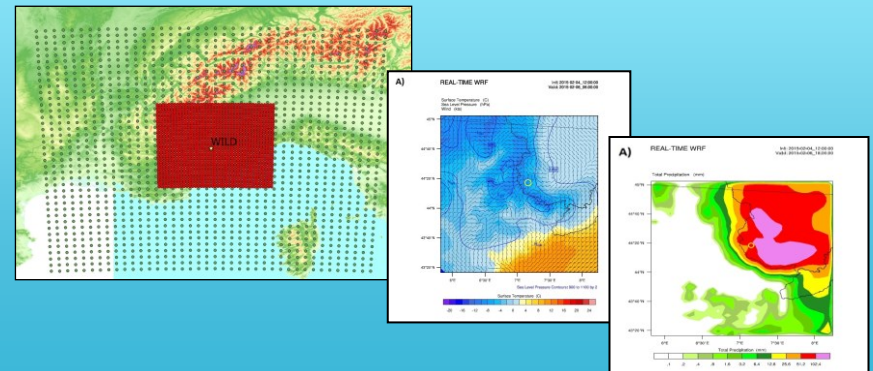


### Test of innovative coatings (ice&hydrophobic)



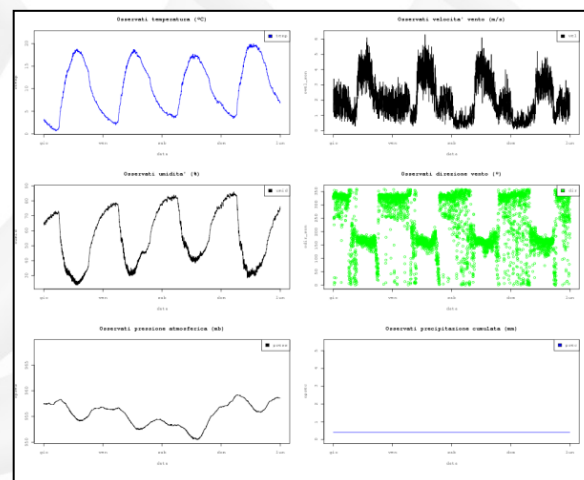
## Prediction system

### Numerical weather forecast and wet-snow load alert on overhead lines





## Real time monitoring on operating overhead line



**weather measurements**